

Desk/3500

Deliver a simple and reliable payment experience at the counter



- Leverage Telium applications on the next-generation payment terminal
- Make NFC payment a seamless consumer experience
- Comply with the most stringent security requirements



The Desk/3500 offers a seamless payment experience. It leverages the Telium application portfolio and complies with future security standards.



• **Highest security**

The Desk/3500 is PCI-PTS 5.x certified. Its Telium TETRA OS uses the latest cryptographic schemes with future-proof key length.

• **All payment options**

The Desk/3500 enables NFC couponing and wallet use cases, in addition to EMV Chip & PIN, swipe and contactless.

• **User-friendly and intuitive interface**

Featuring intuitive card readers and applications menu, it provides a seamless payment experience.

• **Compatible with Ingenico's suite of services**

The Desk/3500 works in unison with Ingenico's supporting service platforms, meaning merchants will have access to business services such as estate management reporting. Software updates and day-to-day support deliver a hassle-free experience for those using this innovative series.

• **Maximized network availability**

In addition to Ethernet and modem, the Desk/3500 offers an Ethernet/modem and Wi-Fi/Ethernet/Modem models. With it, network availability and communication costs are fully optimized.

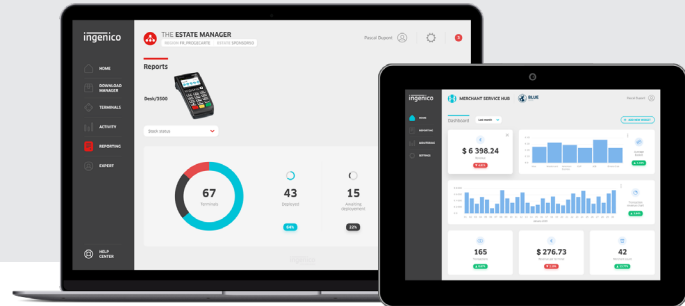
• **Seamless NFC payment**

The Desk/3500 boosts NFC payment by offering to customers a seamless experience through a dedicated contactless card reader zone and faster transaction flows.

• **Secure Telium TETRA OS**

Backed by 40 years of experience and with its user-friendly interface, the Telium TETRA operating system includes the best security mechanisms embedded to protect transaction privacy and leverages Ingenico's unique portfolio of payment applications.

The Desk/3500 Series is supported by our Cloud Services



Processor	• Application & Crypto processor	• Cortex A5	✓
Memory	• Internal	• 256 MB Flash, 128 MB RAM	✓
OS		• Telium TETRA	✓
SAM		• 2 SAM	✓
Card Reader(s)	• Magstripe • Smart card • Contactless	• ISO 1/2/3, 500K lifespan • EMV Level 1, 500K lifespan • EMV Level 1 compliant	✓ ✓ ✓
Display	• Color	• 2.8" display, backlit, QVGA (320x240 pixels)	✓
Keypad		• 20 ergonomic keys, raised marking, backlit	✓
Audio	• Buzzer		✓
Thermal Printer	• Speed in lines/s • Paper roll cage	• 20 lines/s • 58 mm width x 40 mm	✓ ✓

Terminal Connectivity	• Wireless • Wired	• Wi-Fi • Dial-up MODEM • Ethernet 10/100 base T	Optional ✓ ✓
Terminal Connections	• USB • Power Supply • Serial	• 1 USB Host • 1 USB Slave • Dedicated power Jack • 1 RS232	✓ ✓ ✓ ✓
Power Supply		• 24W	✓
Terminal Size		• 7.3x2.6x3.2x2.6" (187x62x68 mm)	✓
Weight		• 12 oz (340 g)	✓
Environment	• Operating Temperature • Storage Temperature • Operating Humidity	• 32°F to 104°F (0°C to +40°C) • -4°F to 131°F (-20°C to +55°C) • 85% non-condensing at 104°F (+40°C)	✓ ✓ ✓
Accessories	• Magic Box • Privacy shield	• 1xRS+ • 1xPower+1xEth.+1xLine In • Field upgradable	Optional Optional
Security		• PCI PTS 5.x	✓



www.ingenico.com

ingenico