

Desk/1500

Interact with customers at the counter with the simplicity of a compact device



- Speed up the payment for Desk/series terminals
- Manage customer interface for any type of payment
- Integrate with any counter space thanks to a compact and nimble design

The Desk/1500 is a durable multi-payment acceptance solution designed to enhance customer experience at checkout.

Optimized checkout time

Payment validation is better when synchronised with the customer and however they want to pay. Equipped with a clear contactless zone, large keypad and an advanced consumer display, the Desk/1500 enhances usability and accelerates the checkout.

Designed for a limited space

The compact Desk/1500 fits easily on any counter, with options for either a mounted or unmounted terminal to suit the available desktop space. To save space, the Desk/1500 can act in place of the larger Desk/5000 terminal.

Highest security

The Desk/1500 is certified and fully compliant with the latest global and local PCI regulations to ensure long-term payment security compliance – protecting data for years to come.

Fast and unified integration

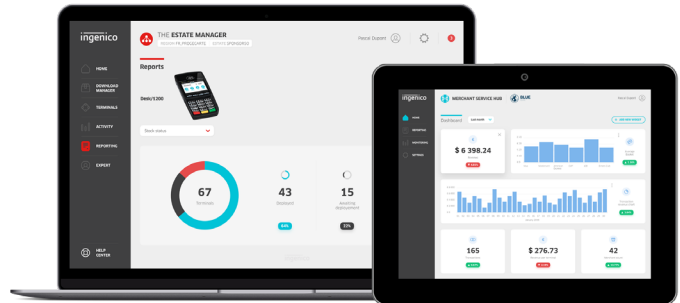
With plug-and-play installation and USB connection, the Desk/1500 connects to any Desk/series device, offering a speedy and unified solution.

Compatible with Ingenico's suite of services

The Desk/1500 works in unison with Ingenico's supporting service platforms, meaning merchants will have access to business services such as estate management, software updates and day-to-day support deliver a hassle-free experience for those using this innovative range.



The Desk/1500 is supported by our Cloud Services



| | | | |
|-----------------------------|--|---|-------------|
| Processor | • Application & Crypto processor | • Cortex A5 | • |
| Memory | • Internal | • 128 MB Flash, 128 MB RAM | • |
| OS | | • Telium TETRA | • |
| Card Readers | • Magstripe • Smart card • Contactless | • ISO 1/2/3, 500K lifespan • EMV Level 1, 500K lifespan • EMV Level 1 | • • • |
| Display | • Color | • 2.8" display, QVGA (320x240 pixels) | • |
| Keypad | | • 15 keys, raised marking, 4 function keys | • |
| Audio | • Buzzer | | • |
| Terminal Connections | • USB | • 1 USB Host | • |

| | | | |
|----------------------|--|---|-----------------|
| Terminal Size | | • 7.08x3.26x1.69" (180x83x43 mm) | • |
| Weight | | • 8.95 oz (254 g) | • |
| Environment | • Operating Temperature • Storage Temperature • Operating Humidity | • 32°F to 104°F (0°C to +40°C) • -4°F to 131°F (-20°C to +55°C) • 85% non-condensing at 104°F (+40°C) | • • • |
| Accessories | • Privacy shield | • Factory mounted • Field upgradable | Optional N/A |
| Security | | • PCI PTS 5.x online & offline certified | • |



www.ingenico.com

ingenico